

Modular Fiber Switches

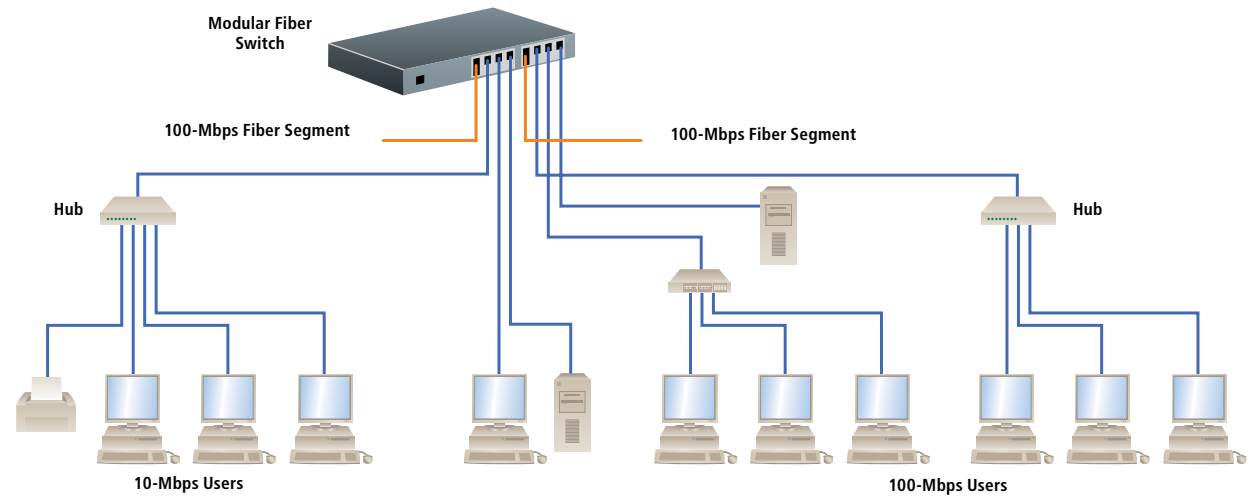
Mix and match fiber and twisted-pair ports on your Ethernet LAN.



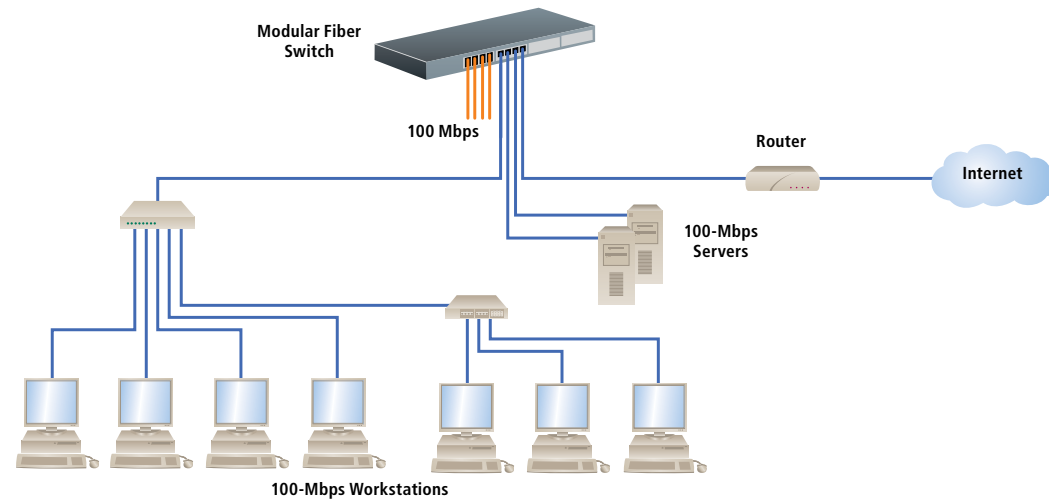
FEATURES

- » 100-Mbps switching services for large, high-performance LANs.
- » Mixed-media configurations for maximum flexibility.
- » Configurable with fiber ports, all connector types and speeds.
- » Configurable with RJ-45 (copper) ports, 10/100 auto-negotiation.
- » Full or half-duplex operation, autosensing.

The switch provides central connectivity while maintaining full 10-Mbps and 100-Mbps bandwidth on each segment.



The switch provides a 100-Mbps fiber backbone facility.



Top: LE1401A with modules (left to right)
LE1425C and LE1426C;
Middle: LE1416A with modules (left to right)
LE1428C, LE1425C, LE1419C, and LE1422C
Bottom: LE1408A with modules (left to right)
LE1427C and LE1419C



OVERVIEW

With the **Modular Fiber Switch**, you can configure any mix of fiber or RJ-45, 100-Mbps or 10-Mbps switched ports and connector types. The switch provides the switching speed and the reliability to smoothly support multiple workgroups, each with its own switched 100 Mbps or 10 Mbps domain, for increased performance using any available fiber media type or twisted-pair cabling.

Choose from a variety of connectors. The twisted-pair ports are 10/100 autonegotiating. Mixed-media combination modules are also supported by the switch.

In a typical application, groups of standard dual-speed 10-/100-Mbps hubs, or 100-Mbps hubs and switches, will form a series of subnets for workgroups or multi-system power users. Each subnet is served by a separate switched port on the Modular Fiber Switch, and each of these subnets has full 100-Mbps or 10-Mbps bandwidth. Local traffic on one subnet, either 100 Mbps or 10 Mbps, is switch-isolated from the other subnets for high overall network performance.

For remote offices, campus environments, ISPs, or telecommunications facilities, select the 100-Mbps multimode SC fiber module (LE1421C-40K). It supports full duplex transmissions up to 40 kilometers (24.8 miles). That's twice the distance of the other 100-Mbps fiber modules.

Easy to install and use, the **Modular Fiber Switch** is designed for organizations with multiple workgroups, remote offices, and network traffic centers. The switch automatically learns and maintains addresses of attached nodes, so it adapts to network changes and expansions for plug-and-play operation. Front-mounted LEDs provide status information on each port.

TECH SPECS

Address Table — 24K nodes with address aging
Cooling Method — Fan cooled, internal @ 9 cfm
Filtering and Forwarding Rate — 16-port aggregate;
 2380K packets per second
Latency — 100 Mbps: 5 μ s + packet time;
 10 Mbps: 15 μ s + packet time
Packet Buffers — 8 MB dynamic
Processing Type — Store and forward with IEEE 802.3x full-duplex flow control
Standards — IEEE 802.3: 10BASE-T, 10BASE-FL;
 IEEE 802.3u: 100BASE-TX, 100BASE-FX
Connectors —
 LE1401A, LE1408A: (1) power, (2) slots for modules;
 LE1416A: (1) power, (4) slots for modules;
 LE1424C, LE1428C: (4) pairs of ST®;
 LE1419C, LE1421C, LE1421C-40K: (4) pairs of SC;
 LE1422C: (4) MT-RJ;
 LE1425C: (4) RJ-45;
 LE1427C: (3) RJ-45, (1) pair of ST; LE1426C, LE1426C-SM:
 (3) RJ-45, (1) pair of SC
Indicators — Chassis: Power, Per port: LK: ON when link is operational;
 ACT: ON with port activity;
 FDX/HDX: ON for full duplex mode, OFF for half-duplex mode;
 10/100: ON for 100 Mbps, OFF for 10 Mbps
Power — Input: 110 to 240 VAC, 47 to 63 Hz, autosensing, internal;
 Consumption: LE1401A, LE1408A: 20 W, typical;
 LE1416A: 35 W, typical
Size — LE1401A: 1.75"H (1U) x 9"W x 9"D (4.4 x 22.9 x 22.9 cm); LE1408A,
 LE1416A: 1.75"H (1U) x 17"W x 9"D (4.4 x 43.2 x 22.9 cm)
Weight — LE1401A: 2.5 lb. (1.1 kg); LE1408A, LE1416A: 4 lb. (1.8 kg)

| Item | Code |
|---|----------------------|
| Modular Fiber Switch Chassis | |
| 8-Port | LE1401A |
| 8-Port Rackmount | LE1408A |
| 16-Port Rackmount | LE1416A |
| <i>(The LE1408A and LE1416A include a 19" rackmount kit.)</i> | |
| Fiber Modules, 4-Port | |
| 10-Mbps | |
| Multimode-ST | LE1424C |
| 100-Mbps | |
| Multimode-ST | LE1428C |
| Multimode-SC | LE1419C |
| Multimode-MT-RJ | LE1422C |
| Single-Mode-SC | LE1421C |
| 100-Mbps for Transmissions up to 40 km | |
| Single-Mode-SC | LE1421C-40K |
| Twisted-Pair Module, 4-Port (One with Uplink) | |
| 10-/100-Mbps RJ-45 | LE1425C |
| Mixed-Media Modules, 4-Port | |
| (3) 10-/100-Mbps RJ-45, (1) 100-Mbps Fiber | |
| Multimode-ST | LE1427C |
| Multimode-SC | LE1426C |
| Single-Mode-SC | LE1426C-SM |
| Blank Panel | LE1416A-BLANK |
| Remember to order cables... | |
| Duplex Fiber Optic Cable, PVC, ST-ST, Custom Lengths | EFN062-CC |